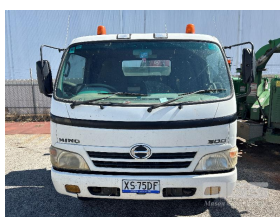


2008 HINO 300C XZU427R 816 4x2 SINGLE CAB TIPPER

Asset Details

Build Date:	2008		
Compliance:	2008		
Make:	HINO		
Model:	300C		
Variant:	XZU427R		
Series:	816		
Body Type:	SINGLE CAB TIPPER		
Gearbox:	5 SPEED		
Transmission:	MANUAL TRANSMISSION		
Engine Make:			
Engine Size:	4.0 LITRE DIESEL		
Fuel Type:			
Diff Make / Size:			
Suspension:	SPRING SUSPENSION		
Ext Colour:	WHITE DUCO		
Tyre Size:			
Tyre Condition:			
Doors:	2	Seats:	
Volume:		Height:	
GCM:	11,000kg	SWL:	



Asset Identification

Odometer:	390,180kms SHOWING	Rego:	XS 75 DF	State:	SA	Expiry:	
VIN:	JHFYU20H200001472	PIN:					
Engine No:		Hours:					
Papers:		Keys:	1	Books:		Service Books:	

Features

AIR CON, HYDRAULICS, STEEL TRAY, FITTED WITH FASSI CRANE
MOD: MICRO M30A.13
DOM: 2012
MAX CAP: 995kg
MAX REACH: 4.7m
BEHIND CAB STORAGE BOXES & UNDER TRAY TOOL BOXES

KEY #52