

QTY

DESCRIPTION



- 1 2013 TOYOTA HILUX KUN26R 150 SERIES DUAL CAB UTE 4x4
 REG: S450 CXY
 VIN: MR00FZ22G201196069
 ENG: 1KD195535
 ODO: 182,549kms SHOWING
 3.0 LITRE TURBO DIESEL, AUTOMATIC TRANSMISSION, WHITE DUCO, 4 DOORS, 5 SEAT, 4x4
 ABS, AIR BAG, AIR CON, BULL BAR, CARGO BARRIER, CD PLAYER, CENTRAL LOCKING, CRUISE CONTROL, IMMOBILISER, POWER STEERING, POWER WINDOWS, SIDE STEP, SPARE WHEEL, SPOT LIGHTS, SNORKEL AIR INTAKE FRONT MOUNT SIDE BARS
- KEY #5
 (WITH 2 KEY/S)
 CONDITION:
 FUEL GAUGE - FAULTY READING
 TAIL GATE & REAR - SOME DENTS & SCRATCHES
 FRONT CV JOINT - KNOCKING NOISE ON TURNING



- 1 2016 MITSUBISHI PAJERO V98WL STATION WAGON 4x4
 REG: S794 CMT (SA)
 VIN: JMFLYV98WGJ004872
 ENG: 4M41US0262
 ODO: 311,121kms SHOWING
 3.2 LTR TURBO DIESEL, 5 SPEED AUTOMATIC TRANSMISSION, WHITE DUCO, 4 DOORS, 7 SEAT, 4x4
 AIR BAG, AIR CON, ALLOY WHEELS, BLUETOOTH, BULL BAR, CD PLAYER, CENTRAL LOCKING, CRUISE CONTROL, POWER STEERING, POWER WINDOWS, SIDE STEP, SPARE WHEEL, SPOT LIGHTS, TOW BAR, ROOF MOUNT CARRY ALL
- WITH SERVICE HISTORY RECEIPTS
- KEY #6
 (WITH PAPERS, WITH 1 KEY/S, WITH OWNER'S MANUAL)



- 1 2015 LANDROVER DISCOVERY SPORT HSE TD4 LC, HSE SUV 4x4
 REG: YY 641D
 VIN: SALCA2AC3GH555561
 ENG: DZ884082776224DT
 ODO: 219,948kms SHOWING
 2.2 LITRE TURBO DIESEL, AUTOMATIC TRANSMISSION, WHITE DUCO, 4 DOORS, 5 SEAT, 4x4
 ABS, AIR BAG, AIR CON, ALLOY WHEELS, BLUETOOTH, CD PLAYER, CENTRAL LOCKING, CRUISE CONTROL, IMMOBILISER, POWER STEERING, POWER WINDOWS, SPARE WHEEL, SUNROOF, TOW BAR, TRACTION CONTROL, KEY #9
 (WITH 1 KEY/S, WITH OWNER'S MANUAL, WITH SERVICE BOOKS)
 CONDITION:
 LHS SKIRTING TRIM - MISSING
 RHS INTERIOR DOOR - HANDEL BROKEN/ LOOSE



- 1 2011 HOLDEN COLORADO LT-R DUAL CAB UTE 4x4
 REG: NO PLATE
 VIN: MMMTFS85HBH539107
 ENG: BC6336
 ODO: 286,199kms SHOWING
 3.0 LITRE TURBO DIESEL, 5 SPEED MANUAL TRANSMISSION, SILVER DUCO, 4 DOORS, 5 SEAT, 4x4
 AIR BAG, AIR CON, ALLOY WHEELS, BULL BAR, CANOPY, CD PLAYER, CENTRAL LOCKING, CRUISE CONTROL, POWER STEERING, POWER WINDOWS, ROOF RACKS, SIDE STEP, SPARE WHEEL, KEY #35
 (WITH 1 KEY/S, WITH OWNER'S MANUAL)
 CONDITION:
 BODY - MINOR DENTS & SCRATCHES
 ENIGNE - BLOWS SMOKE

QTY

DESCRIPTION



- 1 2011 MERCEDES BENZ ML300 CDI BLUE EFFICENCY SUV 4x4
 REG: S508 BBO (SA)
 VIN: WDC1641212A743737
 ENG: 64282041137001
 ODO: 173,964kms SHOWING
 V6 3.0 LITRE TURBO DIESEL, 7 SPEED AUTOMATIC TRANSMISSION, DARK BLUE, 4 DOORS, 5 SEAT, 4x4
 ABS, AIR BAG, AIR CON, ALLOY WHEELS, BLUETOOTH, CD PLAYER, CENTRAL LOCKING, CRUISE CONTROL, IMMOBILISER, POWER STEERING, POWER WINDOWS, SIDE STEP, SPARE WHEEL, KEY #36
 (WITH PAPERS, WITH 2 KEY/S, WITH OWNER'S MANUAL)
 CONDITION:
 BODY - MINOR SCRATCHES
 DRIVE TRAIN - POSSIBLE CV JOINT NOISE



- 1 2010 FORD TRANSIT 2 VM VAN SWB
 REG: S277 BVZ (SA)
 VIN: WF0XXXBDFXAB80982
 ENG: H9FBAB80982
 ODO: 115,529kms SHOWING
 4 CYLINDER TURBO DIESEL, 5 SPEED MANUAL TRANSMISSION, WHITE DUCO, 4 DOORS, 3 SEAT,
 REAR STEP,
 SIDE MOUNT FLOOD LIGHTS

 KEY #49
 (WITH PAPERS, WITH 2 KEY/S, WITH OWNER'S MANUAL, WITH SERVICE BOOKS)



- 1 2008 NISSAN PATROL Y61 STATION WAGON 4x4
 REG: S039 AAG
 VIN: JN1TESY61A0399743
 ODO: 317,361kms SHOWING
 3.0 LITRE TURBO DIESEL, AUTOMATIC TRANSMISSION, WHITE DUCO, 4 DOORS, 5 SEAT, 4x4
 AIR BAG, AIR CON, BULL BAR, CD PLAYER, CRUISE CONTROL, POWER STEERING, SIDE STEP, ELECTRIC WINCH
 SNORKEL AIR INTAKE
 DUAL BATTERIES (1 MISSING)

 KEY #52
 (WITH 1 KEY/S)
 CONDITION:
 ENGINE NOT RUNNING - INJECTOR PUMP LEAKING
 - SUSPECT TIMING CHAIN TENSIONER FAILED,
 - TIMING OUT



- 1 2022 ISUZU NPS 75-1SS 4x4 PERSONNEL CARRIER
 REG: NO PLATES
 VIN: JAANPS75HM7100327
 ODO: 31,938kms SHOWING
 PLANT NO: VB117
 ISUZU, 5.2 LITRE TURBO DIESEL, 5 SPEED MANUAL TRANSMISSION, SPRING SUSPENSION, WHITE DUCO, 3 DOORS, 18 SEAT,
 AIR CON, BULL BAR, SRS AIR BAGS, ABT EMERGENCY BRAKE SYSTEM,
 MINE SPEC FIRE SUPPRESSION SYSTEM,
 BATTERY ISOLATION SWITCHES,
 MUIRHEAD VEHICLE MANAGEMENT SYSTEM
 2 x STORAGE COMPARTMENTS

 KEY #7
 (NO PAPERS, WITH 2 KEY/S, WITH OWNER'S MANUAL)
 CONDITION:
 BODY - SOME CORROSION

QTY

DESCRIPTION



- 1 2011 WESTERN STAR CONSTELLATION 4800FX 6x4 LONG NOSE PRIME MOVER
 REG: XS 48 HM
 VIN: SKKJAEDR2CPBL5565
 ENG: 47290750075007
 ODO: 340,341kms SHOWING
 HOURS: 21,73
 GVM: 24,500kg
 GCM: 90,500kg
 DETROIT DD15, 560 TURBO DIESEL, EATON FULLER 18 SPEED SPEED MANUAL TRANSMISSION, AIRBAG SUSPENSION, WHITE DUCO, 11R22.5 2 DOORS, 2 SEAT,
 AIR CON, AIR KIT, ALLOY RIMS, CB RADIO, QUAD TANKS, TURBO TIMER
 VIESE CAB A/C UNIT
 ROAD TRAIN RATED
- KEY #18
 (WITH 1 KEY/S, NO OWNER'S MANUAL)



- 1 2012 UD CONDOR PKC8E PK17-280 6x4 SPACE CAB TRAY TOP
 VIN: JNBPKC8EC00S00657
 ENG: GHY-204062
 ODO: 463,734kms SHOWING
 PLANT NO: XS09HE
 GVM: 23,500kg
 GCM: 32,000kg
 EATON FULLER SYNCHRO 8 SPEED MANUAL TRANSMISSION, WHITE DUCO, 2 DOORS, 3 SEAT,
 AIR CON, STEEL RIMS, STEEL TRAY, 2 WAY RADIO
 STEEL CHECKER PLATE STEEL TRAY LENGHT 30ft
 WITH CONTAINER PINS,
 ADJUSTABLE AIRBAG SUSPENSION, SPARE TYRE
 BATTERY ISOLATION SWITCHES
 UNDER TRAY TOOL BOX
- KEY #4
 (WITH 1 KEY/S)



- 1 2019 HINO 300 616 SERIES 2 4X2 REFRIGERATED PANTEC TRUCK
 REG: S785 DCP (SA) (EXPIRED)
 VIN: JHHCCS3H50K001907
 ODO: 308,972km SHOWING
 GVM: 4495kg
 AUTOMATIC, TURBO DIESEL, 3 SEAT,
 AIR CON, THERMO KING REFRIGERATED TRUCK BODY WITH FREEZER COMPARTMENT
 MODEL: V-500MAX
 S/NO: IF1956/18
 DOM:04/2019
 INTERNAL SIZE: 3100 x 2000 x 1800mm
- KEY #26
 (WITH PAPERS, WITH 1 KEY/S, WITH OWNER'S MANUAL, WITH SERVICE BOOKS)



- 1 1998 ISUZU 300 MEDIUM NP 4x2 TRAY TRUCK
 REG: SB 08 KR
 VIN: JAANPR71LW7100804
 ENG: 4HG1596704
 ODO: 159,755kms SHOWING
 GVM: 6,200kg
 GCM: 8,200kg
 4.6 LTR DIESEL, 5 SPEED SPEED MANUAL TRANSMISSION, SPRING SUSPENSION, 2 DOORS, 3 SEAT,
 AIR CON, STEEL TRAY, SPARE WHEEL,
- KEY# 37
 (WITH 1 KEY/S, WITH OWNER'S MANUAL)

QTY

DESCRIPTION



- 1 2013 CATERPILLAR 432F, BACKHOE LOADER
 PIN: CAT0432FTLNR01106
 REGO No. S73 SAG (SA)
 FULLY ENCLOSED A/C CAB,
 CAT 3054C, 94HP, 4 CYLINDER DIESEL ENGINE,
 HRS SHOWING 8,584
 FITTER WITH FRONT LEVELING BLADE & BACKHOE GP TRENCHING BUCKET.
 2 x STABILIZERS, BATTERY ISOLATION SWITCH,
 1 x KEY, NO REGO PAPERS
 KEY #19



- 1 1990 CUSTOM MADE, TP2, TANDEM AXLE PLANT TRAILER
 REG: TBH 403 (SA)
 VIN / CHASSIS: 2440
 ATM: 5,800kg
 4400 x 1820mm
 RING FEEDER HITCH
 OVRO HOIST LEG
 3 x SPARE WHEELS
 AIR BRAKES
 GVM: 5,800kg
 MASS: 2,000kg
 (WITH PAPERS)



- 1 1979 FREIGHTER SINGLE AXLE PLANT TRAILER
 REG: S698 TDW
 VIN / CHASSIS: 80302
 8.25R15 TR, DRUM BRAKES, RING FEEDER HIT,
 5,510 LBS PAYLOAD CAP
 MESH STEEL DECK
 SIZE: 3000 x 1730mm
 REAR HINGED RAMPS
 SPARE WHEEL
 AIR BRAKES
 (WITH PAPERS)



- 1 CNC HORIZONTAL TURNING CENTRE, 2022 SMEC
 MOD: SL2500X
 S/NO: 23500AX-00059
 HOURS: 8 SHOWING ONLY
 12 STATION TURRET
 BMT65 INTERFACE
 3 JAW CHUCK
 MAX SPINDLE SPEED: 3500RPM
 WITH LARGE QUANTITY TOOLING IN CABINET
 WEIGHT: 5200kg
 3 PHASE

SOLD IN SITU INSPECTION BY APPOINTMENT



- 1 AIR COMPRESSOR, CAPS
 MOD: SRY-CS-10-500
 TYPE: HGS7.5
 DOM: 2016
 S/NO: 123712
 CAPACITY: 0.95m3/MIN
 PRESSURE 10 BAR
 POWER: 7.5kw
 WITH INBUILT DRYER UNIT
 MOD: CDRS35-T
 415V WITH FORK POCKETS

QTY

DESCRIPTION



- 1 2021 VERTICAL BALING MACHINE, CK INTERNATIONAL
 MOD: CK300VX
 S/NO: 353-244
 HYDRAULIC PRESSURE: 180 BAR
 POWER RATING: 4kw
 LOW PROFILE DESIGN, HEAVY DUTY CONSTRUCTION
 PRODUCES 300kg BALES (CARDBOARD) MECHANICAL BALE EJECTION SYSTEM
 BALER HEIGHT: 1990mm
 WIDTH: 1130mm
 DEPTH: 780mm
 415V

- 1 POLISHING TUMBLER/FINISHING MACHINE,
 MOD: X6P60
 CENTRIFUGAL 4 BARREL CAPACITY
 DOM: 2017
 FORWARD & REVERSE
 TIMER CONTROLLED
 EACH DRUM SIZE: 430 x 200cm DIAMETER
 WEIGHT: 550kg
 4kw, 3 PHASE
 WITH PLASTIC BIN OF COMPONENTS



- 1 SANDBLASTING UNIT, AXXIOM, SCHMIDT ABRASIVE BLASTING
 4 GUN CAPACITY
 MOD: 75CFBULK
 DOM: 2020
 MAWP: 1034KPA
 WITH AIR PREP SYSTEM, AXXIOM
 MOD: ACS750
 MAWP: 1034KPA
 INCLUDING
 AIR FILTRATION SYSTEM, SKID MOUNTED WITH
 FORK POCKETS, VACUUM HOSE & ABRASIVE COLLECTION FITTING

- 1 ABRASIVE BLASTING CABINET, BLAST OFF
 FULLY ENCLOSED
 GREY STEEL
 SIZE: 1200 x 720 x 1700mm (H)
 FITTED WITH INTERNAL LIGHTING, GLOVES, BLAST & AIR GUNS
 FOOT OP CONTROLLER

- 1 ABRASIVE BLASTING CABINET, BLAST OFF
 FULLY ENCLOSED
 GREY STEEL
 SIZE: 1200 x 720 x 1700mm (H)
 FITTED WITH INTERNAL LIGHTING, GLOVES, BLAST & AIR GUNS
 FOOT OP CONTROLLER

QTY

DESCRIPTION



- 1 BOILER, FULTON
 MOD: VSRT-50
 VERTICAL SPIRAL RIB TUBELESS BOILER
 DOM: 2021
 ADD DESIGNATION: WSV-0150512084
 S/NO: F1S013024A
 ENERGY OUTPUT 500kw
 MAX STEAM CAP: 782kg/HOUR
 MAWP: 10.3 BAR
 NATURAL GAS & 415V
 WITH ACCESSORIES INCLUDING:
 FILTRATION UNIT, GRUNDFOS PUMP, PRESSURE RELIFE VALVE
 WATER TREATMENT CHEMICALS, ETC (ON PALLET)



- 1 STAINLESS STEEL HEADER TANK, SPIRAX SARCO
 2000 LITRE
 PART NO: 083-4012002
 S/NO: PE3928
 DOM: 2024
 CYLINDRICAL, VERTICAL MOUNT ON 4 x LEGS
 CONICAL BOTTOM WITH OUT FEED
 5 x SIDE MOUNT IN/OUT FEEDS
 TOP LATCHED LID & SIDE MOUNT OVERFLOW BOX
 WITH STEEL FRAME STAND
 AS NEW
 SIZE: 2800 (H) x 1600mm (W) APPROX

- 1 CNC ROTARY ENGRAVING & ROUTING MACHINE, VISION ENGRAVING
 MOD: VISION 1624
 WORK TABLE AREA: 406 x 610mm
 HIGH SPEED SPINDLE
 SERIES 4 CONTROLLER
 415V WITH ACCESSORIES



- 1 HORIZONTAL BAND SAW, HAFCO METAL MASTER
 MOD: BS-400AS
 DOM: 2008
 POWER CLAMPING,
 660mm INTERNAL WIDTH x 550mm (H) (APPROX)



- 1 WORKSHOP EVAPORATIVE AIR-CONDITIONING UNIT,
 MOD: FANCE100L
 POWER: 550w
 AIR FLOW: 18,000m3/HR
 240V MOBILE WITH REMOTE
 SIZE: 680 x 1120 x 1620mm (H)

QTY

DESCRIPTION



- 1 WORKSHOP EVAPORATIVE AIR-CONDITIONING UNIT,
MOD: FANCE90ICE
POWER: 200w
AIR FLOW: 9000m3/HR
240V MOBILE WITH REMOTE
SIZE: 800 x 550 x 1370mm (H)



- 1 ENGINEERING LAYOUT TABLE, 25mm PLATE TOP OVER A 20mm PLATE TOP,
TOP PLATE SIZE: 2260 x 1200mm
BOTTOM PLATE SIZE: 1560 x 900mm
HEAVY DUTY STEEL FRAME, 960mm (H)



- 1 STATIONARY DIESEL ENGINE, CHINESE
MOD: ZH4100ZG
HIGH SPEED, 4 CYLINDER DIESEL
2000RPM
DOM: 2022
FITTED WITH LEVER ACTIVATED CLUTCH
ASSEMBLY TO 4 BELT PULLEY
WITH ASSORTED ACCESSORIES
AS NEW



- 1 PACKAGED SCREW AIR COMPRESSOR, INGERSOLL RAND
MOD: MM160
S/NO: 111792 IFHG BEB
DOM: 2014
CAPACITY: 26.00m3/MIN
RATED PRESSURE: 0.86 MP
RATED POWER: 160kw
HOURS: 11,365 SHOWING TOTAL (5320 LODAED)

SOLD IN SITU, LOCATED AT 39 COX ST, WINGFIELD
PLEASE CONTACT CHRIS SAWYER 0411 619 777 TO ARRANGE INSPECTION
THERE WILL BE A FORKLIFT ON SITE FOR LOADING

- 1 SIAT STRETCH FILM PALLET WRAPPER, (FAULTS IN MOTOR)
DOM: 2008
S/No: 50105



- 1 DRY ICE PRESSURE CLEANING/BLASTING UNITS, BUSE GASTEK
MOD: BUSE BOOSTER 20
BAR: 16
240V
MOBILE WITH HOSES

QTY**DESCRIPTION**

- 1 PIPE BENDER/EXHAUST BENDER, RADIUS BENDERS, SERIES FOUR
HYDRAULIC, 415V, MOBILE,
WITH LARGE QUANTITY OF DIES TO SUIT
FROM 3/4" TO 2.5"
1 x PALLET



- 1 PIPE BENDER/EXHAUST BENDER, BIG RED
HYDRAULIC, 415V, MOBILE,
WITH LARGE QUANTITY OF DIES TO SUIT
FROM 1" TO 2.5"
1 x PALLET



- 1 PIPE BENDER/EXHAUST BENDER, RAPID
MOD: 3000E
HYDRAULIC, 415V, MOBILE,
WITH LARGE QUANTITY OF DIES TO SUIT
FROM 1" TO 2.5"
1 x PALLET



- 1 CORNER NOTCHING MACHINE, COMCACA
MOD: 6204
BLADE SIZE: 220 x 220mm
415V

QTY

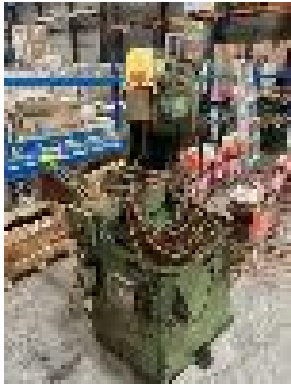
DESCRIPTION



- 1 CONCRETE GRINDING & POLISHING MACHINE, XINGYE MACHINE CO
 MOD: Q1J
 600mm (W)
 4 x MULTI HEAD POLISHING ROTORS
 SPEED: 150 TO 1690 RPM
 415V
 WITH LARGE QUANTITY ASSORTED GRIT ABRASIVE STONE & POLISHING PADS TO SUIT



- 1 DRY ICE PRESSURE CLEANING/BLASTING UNITS, BUSE GASTEK
 MOD: BUSE BOOSTER 20 S
 BAR: 16
 240V
 MOBILE WITH HOSES & HAND PIECE



- 1 COLD SAW, THOMAS
 MOD: 350A
 350mm DIAMETER BLADE
 POWER CLAMP, COOLANT FEED
 415V



- 1 REGAL SPEED BOAT
 MOD: RUSH 14 JETBOAT
 HIN: AU-TSA019750AFS
 MARINE REG: FM149S
 4 PERSON (700LB CAPACITY)
 POWERED BY SUZUKI 40HP OUTBOARD ENGINE
 FITTED WITH BIMINI CANOPY,
 2 WAY RADIO & HUMMINGBIRD SOUNDER,
 WITH 1994 DUNBIER BOAT TRAILER, SINGLE AXLE,
 MODEL: 4.4 SPORTS
 REG: NO PLATES
 VIN : 6FJDD333R2224080
 GALV STEEL, HAND WINCH, JOCKEY WHEEL & SPARE WHEEL
 GTM 749kg

KEY #44

QTY

DESCRIPTION



- 1 1968 ALUMINIUM TINNY, SAVAGE, KINGFISHER, 3.5m
S/NO: 503
MARINE REG: ZX1595I
HIN: AU-TSA033736AH9
3 PERSON CARRY CAP
POWERED BY CHRYSLER 3.5HP OUTBOARD ENGINE
WITH SINGLE AXLE TRAILER
REG: S607 TAA
VIN: 67033108051950
BALL HITCH
JOCKEY WHEEL
WINCH & LIGHT BAR
WITH REGISTRATION PAPERS



- 1 WELDING GENSET TRAILER, SINGLE AXLE
REG: TKV 797 (SA)
FITTED WITH CIGWELD GENERATOR WELDER
MOD: MPM 8/300 SS-KA
POWERED BY 3 CYLINDER PERKINS DIESEL ENGINE
HOURS: 6,605 SHOWING
FULLY SILENCED
8KVA
300AMP
415V & 240V AUXILIARY POWER OUTLETS,
MOUNTED IN 6 x 4' TRAILER
BALL HITCH WITH SPARE WHEEL & JOCKEY WHEEL
(WITH PAPERS)



- 1 HYDRAULIC POWER PACK, POWER TEAM
MOD: PG-120HVCK
POWERED BY 6HP PETROL ENGINE
9500PSI
MOBILE



- 1 VINTAGE WOOL SCALES, MERCURY SCALE CO
BALANCING SCALES
MOD: 11302
CAPACITY: 603LB
PLATFORM SIZE: 600 x 600mm

- 1 SANLI MOTORISED MODIFIED RIDE ON LAWN MOWER (NO DECK OR BLADES)
FITTED WITH FRONT MOUNTED BROOM ATTACHMENT



- 1 12 x PIPE REPAIR/JOINER CLAMPS, STAINLESS STEEL
65-85mm ADJUSTABLE
1 x SHELF

QTY

DESCRIPTION



- 1 ARC WELDER, CIGWELD TRANSARC
TRADESMAN HD
60-320 AMP
415V, MOBILE, NO LEADS



- 1 LINCOLN ELECTRIC MIG WELDER
MOD: SP250-1
WITH LEADS & HOSE
415V

- 1 PETROL POWERED STATIONARY MOTOR LT160 5.5HP WITH WATER PUMP

- 1 2 x RIGHT ANGLE DRIVE MOTORS, ALL FAULTS & STATIONARY ENGINE
HONDA GC160, 5HP, ALL FAULTS



- 1 FERTILISER SPREADER, ELECTRIC, 12V
MOD: F5120
120 LITRE POLY HOPPER
VARIABLE SPEED CONTROL
ON PALLET

- 1 2 x IMPELLER PROPS, SUIT OUTBOARD ENGINE

- 1 TORO MOTORISED MODIFIED RIDE ON LAWN MOWER (NO DECK OR BLADES)
MOD::14-38HXL
FITTED WITH PARAMOUNT PETROL POWERED BLOWER

- 1 HONDA GX200 6.5HP MOTOR WITH WATER PUMP



- 1 PTFE TEFLONE HOSE, STAINLESS STEEL BRAIDED
MEDIUM DIA. 15-20mm ASSORTED SIZES AND LENGHT
WITH FITTING TO SUIT
APPROX 50 MTRS
(1 x PALLET)

QTY

DESCRIPTION



1 PTFE TEFLONE HOSE, STAINLESS STEEL BRAIDED
SMALL DIA. 5-10mm ASSORTED SIZES AND LENGTH
WITH FITTING TO SUIT
APPROX 100m
(1 x PALLET)



1 CARDBOARD PARTS BOXES/DRAWERS
310 x 110 x 100mm (H)
QTY x 230 (APPROX)
1 x PALLET



1 CARDBOARD PARTS BOXES/DRAWERS
310 x 110 x 100mm (H)
QTY x 300 (APPROX)
1 x PALLET



1 PVC PARTS DRAWERS
320 x 100 x 100mm (H)
QTY x 600 (APPROX)
1 x PALLET



1 PVC PARTS DRAWERS
320 x 100 x 100mm (H)
QTY x 300 (APPROX)
1 x PALLET



1 PVC PARTS DRAWERS
320 x 100 x 100mm (H)
QTY x 150 (APPROX)
1 x PALLET